

Enhanced Cercospora Leaf Spot Protection for Sugarbeets

THE PHOBOS[®] FC DIFFERENCE

- Protects against new infections and prevents existing disease from progressing in the crop
- Superior foliar performance delivers increased rainfastness and widespread, even leaf coverage compared to Proline[®]
- Optimized Cercospora leaf spot control maximizes sugar content and yield
- Easy-to-use product that is tank-mix compatible with other crop inputs, liquid fertilizers, micronutrients, etc.

CATEGORY	Fungicide
CONTAINS	Prothioconazole (32.3%)
GROUP	3
APPLICATION	Foliar
COMPARE TO	Proline [®]
PACKAGE SIZE	2 x 2.5 gal

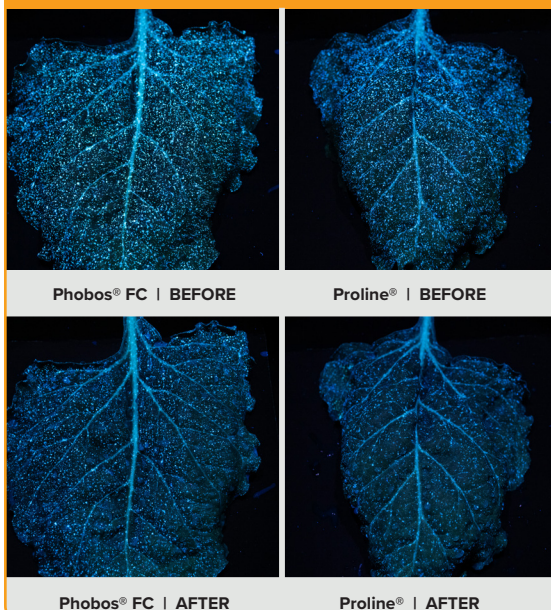
KEY DISEASES CONTROLLED

Cercospora leaf spot

Powdery mildew



DRIES STRONGER. STAYS LONGER.



Thanks to its superior Application Advantage, Phobos[®] FC delivers increased rainfastness, reduced wash-off, and uniform leaf coverage. That means more active ingredient stays where it matters most—protecting your crop through unpredictable weather and maximizing your return on every application.

In a side-by-side foliar spray simulation, Phobos[®] FC retained 60% of its coverage on sugarbeet leaves after a rain event—double the 30% retention seen with Proline[®]. Both products were allowed to dry for one hour before rain exposure.



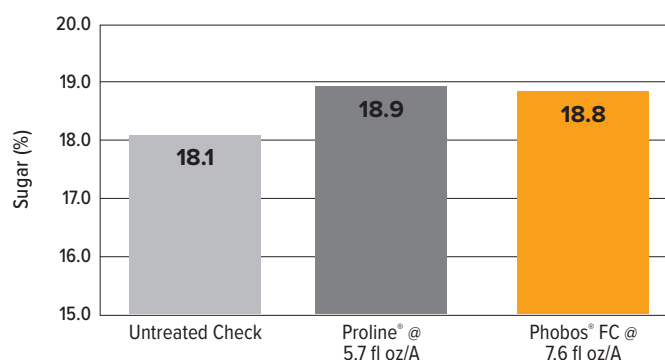
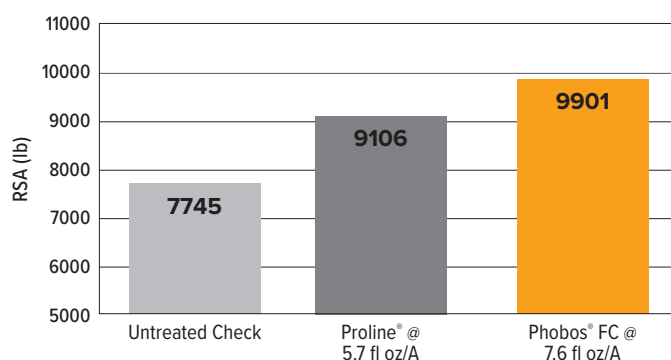
LEARN MORE

about Phobos[®] FC's Application Advantage by scanning below!



STRONG PERFORMANCE VS PROLINE®

Sugarbeet Trials



In four trial locations, Phobos® FC recorded the highest yields and enhanced disease control when compared to untreated and competitor fields. Vive recommends applying Phobos® FC in the first DMI timing to maximize the effect of preventative and curative control to maintain yield potential.

2023. MN, MI

STRONG PERFORMANCE UNDER HIGH-PRESSURE CONDITIONS



Untreated



Proline®



Phobos® FC

Sugarbeets applied with a foliar application of Phobos® FC fungicide, showed significantly less Cercospora leaf spot, leading to an increase in sugarbeet yield and sugar content.

2023. Crookston, MN

RATE AND COMPARISON

	AI (lb/gal)	For Approximate Calculations	Application Rate (fl oz/A)
Phobos® FC	3	Divide by 0.75	<i>Proline®</i> @ 5.7 oz = Phobos® FC @ 7.6 oz
<i>Proline®</i>	4		